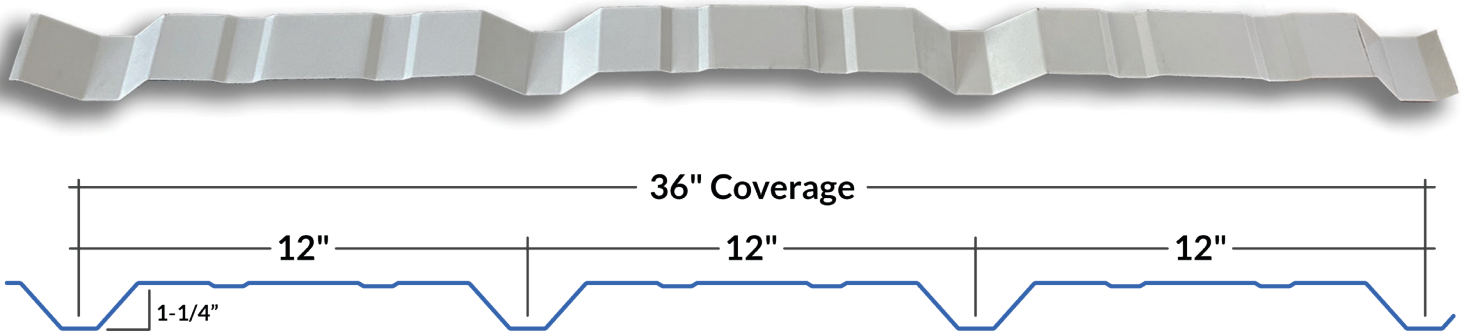


# FR REVERSE

## Info Sheet



## An Architectural Profile for Siding Applications

The *FR Reverse* panel takes our wide span *FR Panel* and flips it over to create an entirely new cladding option. A versatile profile for commercial buildings, residential accents, and architectural applications.

This panel still features the largest span at 12" and a rib depth of 1-1/4", offering a dramatic and pronounced panel profile that pairs well with many other panel configurations.

Applications: Wall

Coverage: 36" | Depth: 1-1/4"

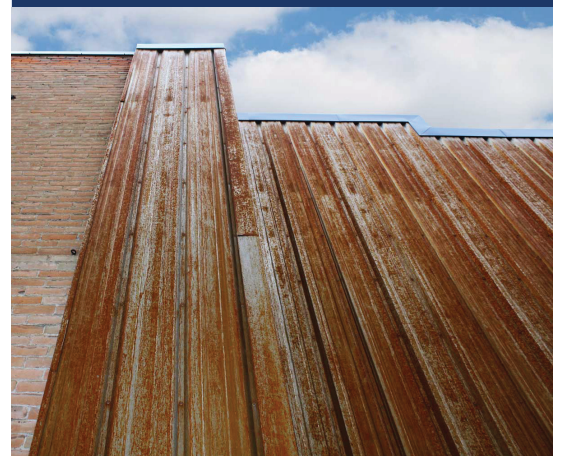
Available Gauges: 24 & 26

Available in 40+ Standard Colours & Specialty Finishes

Cutting charge applies below 48"

More colours & gauges are available by special order

### Try Our Specialty Finishes



Pictured is our *Weathering Steel*.

EXPOSED  
FASTENER  
— SERIES —

Visit Our Website at  
**FORMASTEEL.CA**

(403) 553-3309


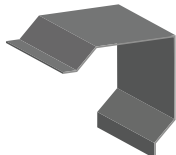


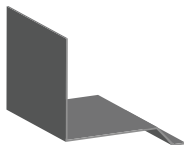
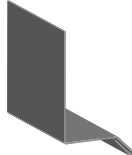

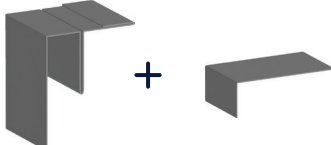
orders@formasteel.ca

\*Last Updated  
August 2024

FR REVERSE

# Recommended Trims

Our trim codes will depend on your rib height/coverage of choice. Included on this sheet are the most commonly selected trims for this panel but *custom trims are available*. When selecting your trim, please ensure you indicate your gauge & colour of choice.

 <p><b>J CHANNEL</b> J06</p>	 <p><b>OUTSIDE CORNER</b> TOSC05</p>	 <p><b>GABLE DIVIDER</b> GD03</p>
 <p><b>END WALL</b> EW01</p>	 <p><b>SIDE WALL</b> SW02</p>	 <p><b>BASE</b> BF02</p>
 <p><b>HEADER</b> HD02</p>	 <p><b>2-PIECE INSIDE CORNER</b> 15IC &amp; 10LF</p>	

**Questions?** Contact your Forma Steel Dealer for custom trim options, full trim lists, and measurements. Find a dealer near you on our website!



**40+ Standard Colours & Specialty Finishes**

To view swatches of your colour options, [visit our website!](#)



## FOR COMPLETE INSTALLATION

*Don't Forget the Accessories!*



Closures



Plumbing Flashings



Fasteners



Butyl Tape



Sliding Door Hardware